

LARGE CONFERENCE



SPECIFICATION GUIDE

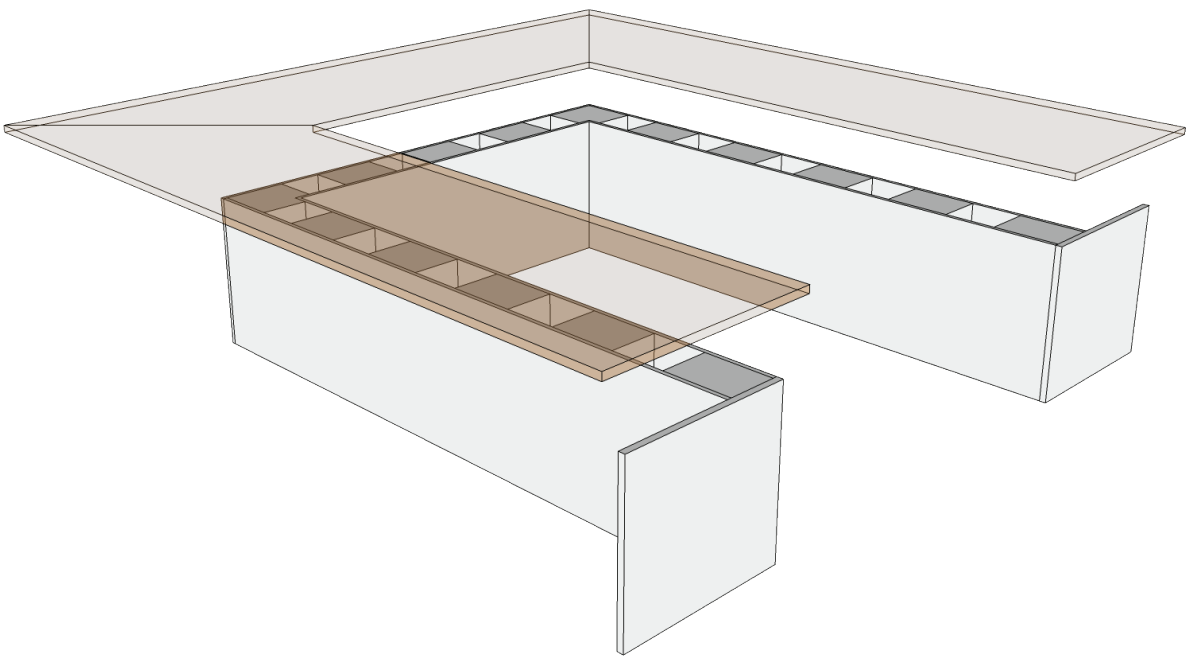
REV 111924

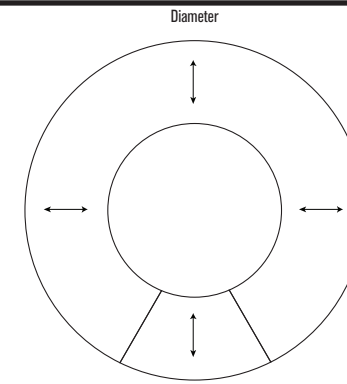
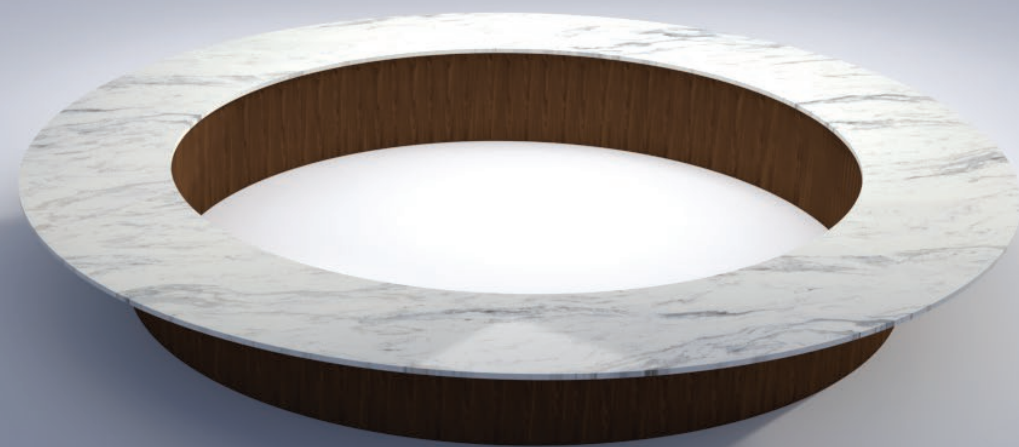
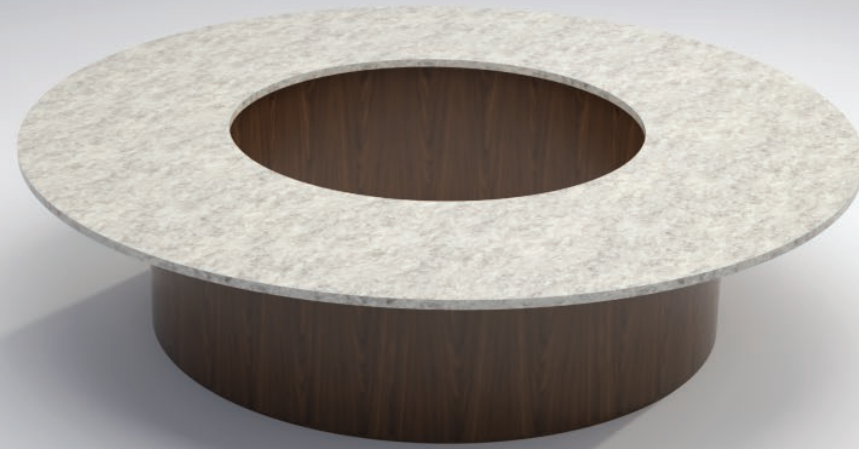
NOTE: Due to the recent unanticipated cost increase of raw materials please call to confirm list pricing before you quote your clients

COLECRAFT
The Art of Detail™

Notes

Area with horizontal dotted lines for notes.



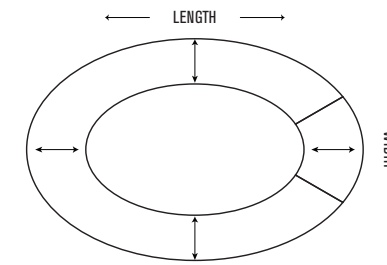
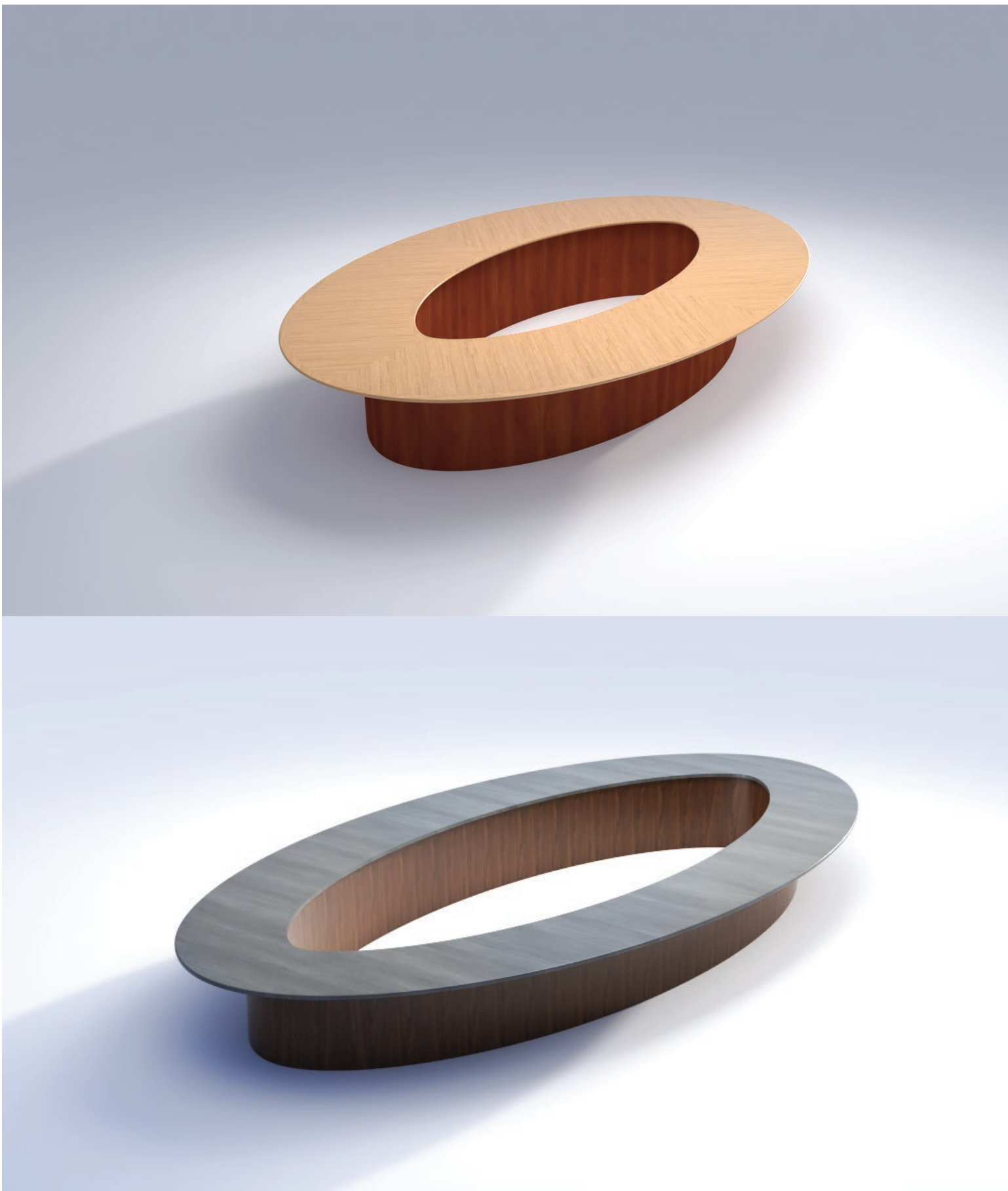


- | | | |
|-------|------|--------|
| WKNF1 | WBNS | WXWE* |
| WBNS1 | WDRD | WXCR |
| WDRD1 | WRBV | WXBV |
| WRBV1 | WBEV | WXBD |
| WBEV1 | WTRD | WXRD |
| WTRD1 | | WXFL |
| | | WXBVL* |

- LAMINATE TOP
- SE*
 - PVC
 - LBVL*

TABLE TOP DEPTH	MODEL #	DIMENSIONS	SEATS	DELUXE	PREMIUM	STANDARD	BASIC
30"	CIR-30120	120" DIAM	12	\$56,602	\$50,993	\$49,230	\$36,212
	CIR-30144	144" DIAM	14	\$65,301	\$63,267	\$59,564	\$46,788
	CIR-30168	168" DIAM	18	\$76,184	\$73,812	\$69,491	\$54,586
	CIR-30192	192" DIAM	20	\$95,193	\$85,760	\$83,341	\$60,061
	CIR-30240	240" DIAM	24	\$121,675	\$109,617	\$103,400	\$76,869
	CIR-30288	288" DIAM	30	\$144,718	\$130,376	\$126,741	\$92,989
	CIR-30336	336" DIAM	34	\$174,562	\$157,263	\$152,042	\$109,918
36"	CIR-36120	120" DIAM	12	\$63,750	\$57,433	\$52,402	\$39,147
	CIR-36144	144" DIAM	14	\$68,753	\$65,175	\$61,358	\$48,497
	CIR-36168	168" DIAM	18	\$80,211	\$76,038	\$71,585	\$56,580
	CIR-30192	192" DIAM	20	\$95,193	\$85,759	\$83,342	\$60,061
	CIR-30240	240" DIAM	24	\$121,675	\$109,618	\$103,400	\$76,869
	CIR-30288	288" DIAM	30	\$144,718	\$130,377	\$126,741	\$92,989
	CIR-30336	336" DIAM	34	\$174,562	\$157,263	\$152,042	\$109,918

Notes :
 • Laminate or Paint can be substituted for veneer on work surfaces at no extra charge •
 • Our Deluxe and Standard edges are available 1-3/4" thickness • add 10 % to cost of table top
 • *Consult Your Colecraft Representative regarding Price Reduction For Wood Tape
 • *Edges WXBVL, LBVL, SE • add 10 % to cost of table top
 • *Edges WXWE • Subtract 10 % to cost of table top



- | | | |
|-------|------|--------|
| WKNF1 | WBNS | WXWE* |
| WBNS1 | WDRD | WXCR |
| WDRD1 | WRBV | WXBV |
| WRBV1 | WBEV | WXBD |
| WBEV1 | WTRD | WXRD |
| WTRD1 | | WXFL |
| | | WXBVL* |

LAMINATE TOP

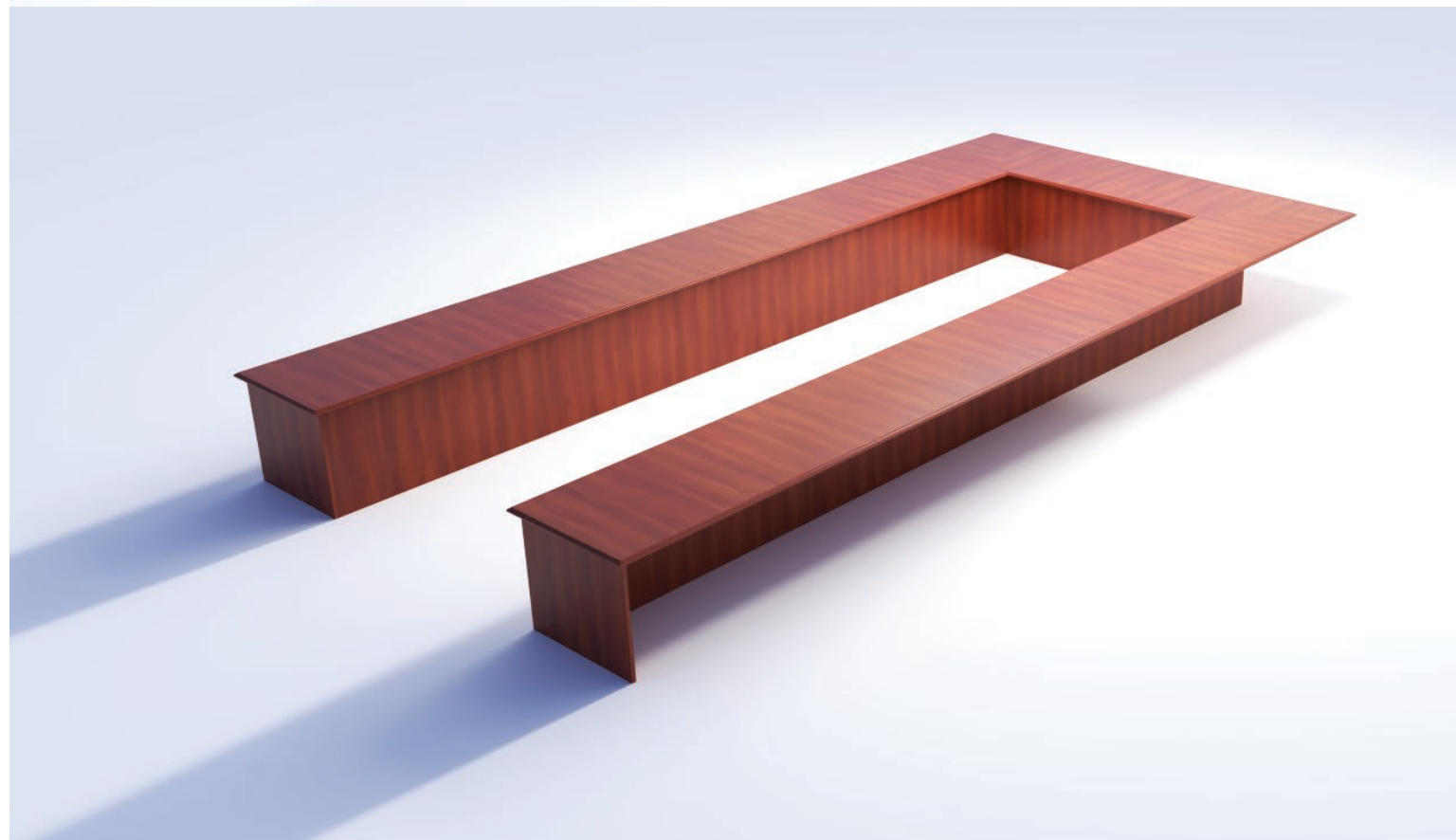
- | |
|-------|
| SE* |
| PVC |
| LBVL* |

TABLE TOP DEPTH	MODEL #	DIMENSIONS	SEATS	DELUXE	PREMIUM	STANDARD	BASIC
30"	OVL-301201144	120"W X 144"L	28	\$60,238	\$56,679	\$53,118	\$41,772
	OVL-301201168	120"W X 168"L	30	\$66,347	\$62,427	\$58,504	\$46,009
	OVL-301201192	120"W X 192"L	34	\$79,937	\$72,015	\$67,491	\$49,129
	OVL-30120240	120"W X 240"L	40	\$97,848	\$88,152	\$82,956	\$59,847
	OVL-30120288	120"W X 288"L	46	\$110,170	\$99,253	\$93,410	\$68,862
	OVL-30120336	120"W X 336"L	52	\$128,963	\$116,182	\$109,646	\$81,486
	OVL-301441168	144"W X 168"L	32	\$71,107	\$66,906	\$62,702	\$49,310
	OVL-301441192	144"W X 192"L	36	\$81,602	\$73,515	\$68,991	\$51,314
	OVL-30144240	144"W X 240"L	40	\$81,537	\$73,457	\$80,933	\$61,293
	OVL-30144288	144"W X 288"L	48	\$111,698	\$100,629	\$94,744	\$71,744
OVL-30144336	144"W X 336"L	54	\$131,078	\$118,088	\$111,552	\$82,959	
36"	OVL-361201144	120"W X 144"L	28	\$63,694	\$61,147	\$57,948	\$44,642
	OVL-361201168	120"W X 168"L	30	\$70,154	\$67,348	\$63,825	\$49,170
	OVL-361201192	120"W X 192"L	34	\$88,970	\$80,153	\$75,118	\$54,681
	OVL-36120240	120"W X 240"L	40	\$107,166	\$96,546	\$90,856	\$65,546
	OVL-36120288	120"W X 288"L	46	\$119,384	\$107,553	\$101,222	\$74,621
	OVL-36120336	120"W X 336"L	52	\$138,740	\$124,991	\$117,959	\$87,664
	OVL-361441168	144"W X 168"L	32	\$75,187	\$72,180	\$68,404	\$52,698
	OVL-361441192	144"W X 192"L	36	\$90,822	\$81,822	\$76,786	\$57,112
	OVL-36144240	144"W X 240"L	40	\$89,302	\$80,452	\$88,640	\$67,130
	OVL-36144288	144"W X 288"L	48	\$121,040	\$109,045	\$102,667	\$77,744
OVL-36144336	144"W X 336"L	54	\$141,016	\$127,041	\$120,009	\$89,248	

Notes : Laminates or Paint can be substituted for veneer on work surfaces at no extra charge •
 Our Deluxe and Standard edges are available 1-3/4" thickness • add 10 % to cost of table top
 *Consult Your Colecraft Representative regarding Price Reduction For Wood Tape
 *Edges WXBVL, LBVL, SE • add 10 % to cost of table top
 *Edges WXWE • Subtract 10 % to cost of table top

Stud Wall Construction with Wire Access Panels

COLECRAFT



Conference Table Tops

COLECRAFT

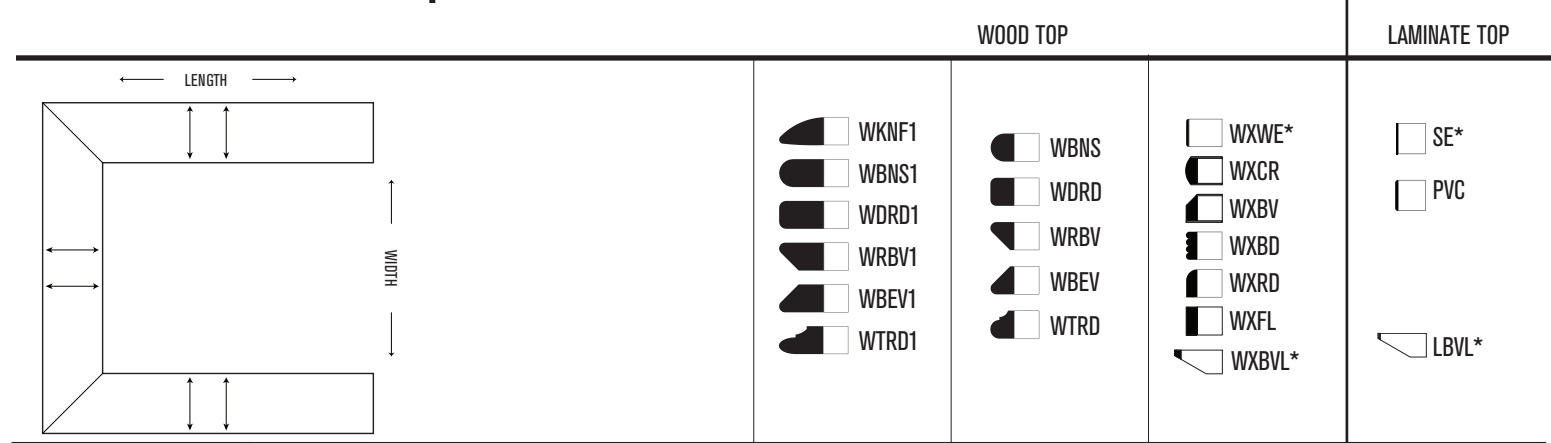
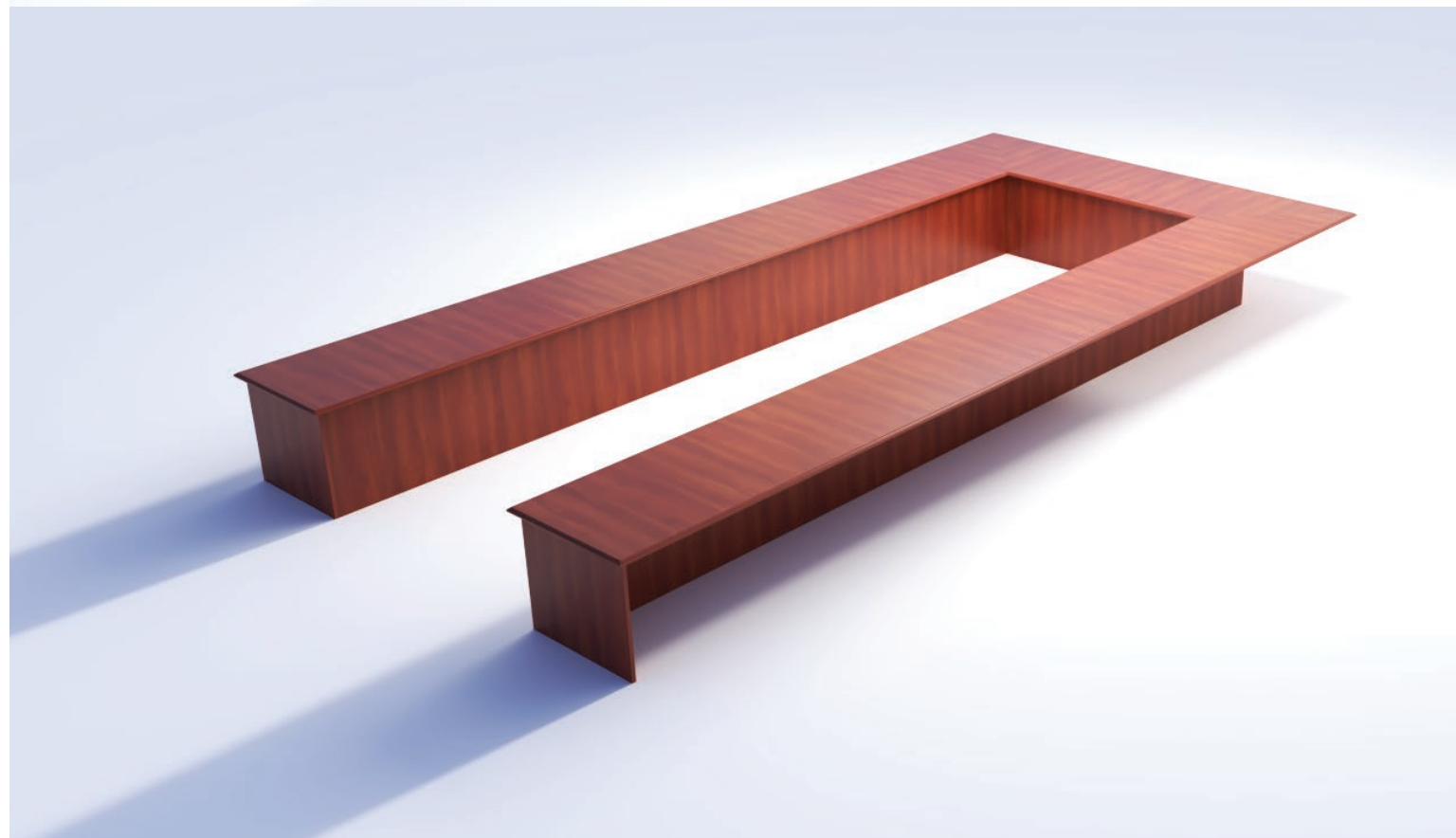


TABLE TOP DEPTH	MODEL #	DIMENSIONS	SEATS	DELUXE	PREMIUM	STANDARD	BASIC
30"	USH-30120120	120"W X 120"L	12	\$37,460	\$36,262	\$35,631	\$27,090
	USH-30120192	120"W X 192"L	16	\$52,444	\$50,766	\$49,884	\$37,926
	USH-30120240	120"W X 240"L	20	\$62,434	\$60,436	\$59,386	\$45,150
	USH-30120288	120"W X 288"L	22	\$72,423	\$70,106	\$68,887	\$52,374
	USH-30120336	120"W X 336"L	26	\$82,413	\$79,776	\$78,389	\$59,598
	USH-30144120	144"W X 120"L	12	\$39,958	\$38,679	\$38,007	\$28,896
	USH-30144192	144"W X 192"L	18	\$54,942	\$53,184	\$52,259	\$39,732
	USH-30144240	144"W X 240"L	20	\$64,931	\$62,854	\$61,761	\$46,956
	USH-30144288	144"W X 288"L	24	\$74,920	\$72,524	\$71,263	\$54,180
	USH-30144336	144"W X 336"L	26	\$84,910	\$82,193	\$80,764	\$61,404
36"	USH-36120120	120"W X 120"L	12	\$38,189	\$37,825	\$36,943	\$30,675
	USH-36120192	120"W X 192"L	16	\$53,464	\$52,954	\$51,720	\$42,945
	USH-36120240	120"W X 240"L	20	\$63,648	\$63,041	\$61,571	\$51,125
	USH-36120288	120"W X 288"L	22	\$73,832	\$73,127	\$71,423	\$59,306
	USH-36120336	120"W X 336"L	26	\$84,015	\$83,214	\$81,274	\$67,486
	USH-36144120	144"W X 120"L	12	\$40,735	\$40,346	\$39,406	\$32,720
	USH-36144192	144"W X 192"L	18	\$56,010	\$55,476	\$54,183	\$44,990
	USH-36144240	144"W X 240"L	20	\$66,194	\$65,563	\$64,034	\$53,170
	USH-36144288	144"W X 288"L	24	\$76,378	\$75,649	\$73,886	\$61,351
	USH-36144336	144"W X 336"L	26	\$86,561	\$85,736	\$83,737	\$69,531

Notes :
 • Laminate or Paint can be substituted for veneer on work surfaces at no extra charge •
 • Our Deluxe and Standard edges are available 1-3/4" thickness • add 10 % to cost of table top
 • *Consult Your Colecraft Representative regarding Price Reduction For Wood Tape
 • *Edges WXBVL, LBVL, SE • add 10 % to cost of table top
 • *Edges WXWE • Subtract 10 % to cost of table top

Panel Base Construction

COLECRAFT



Conference Table Tops

COLECRAFT

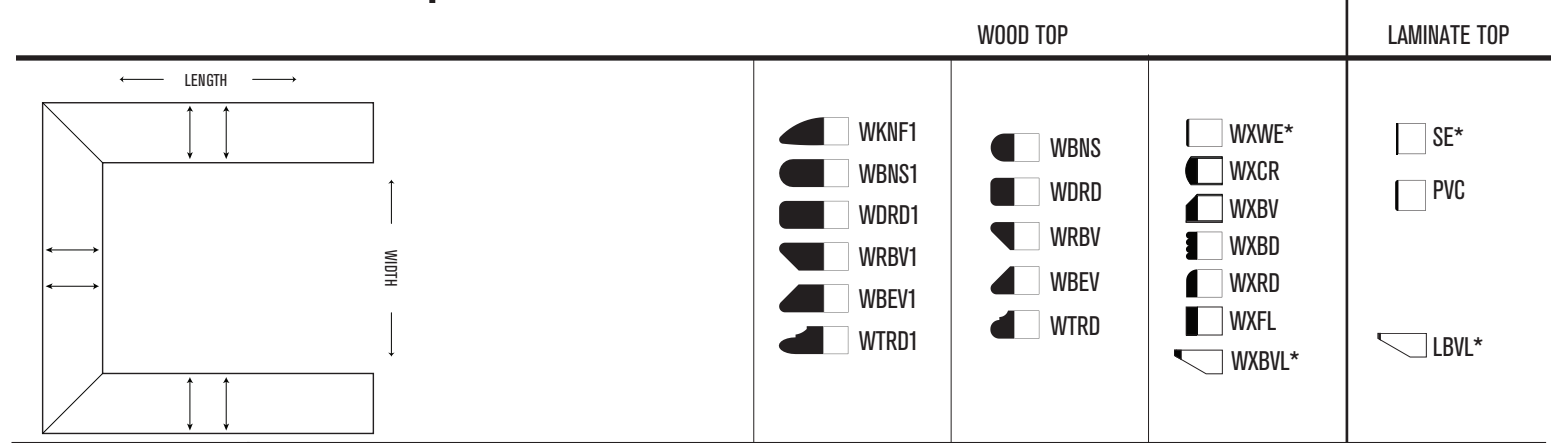
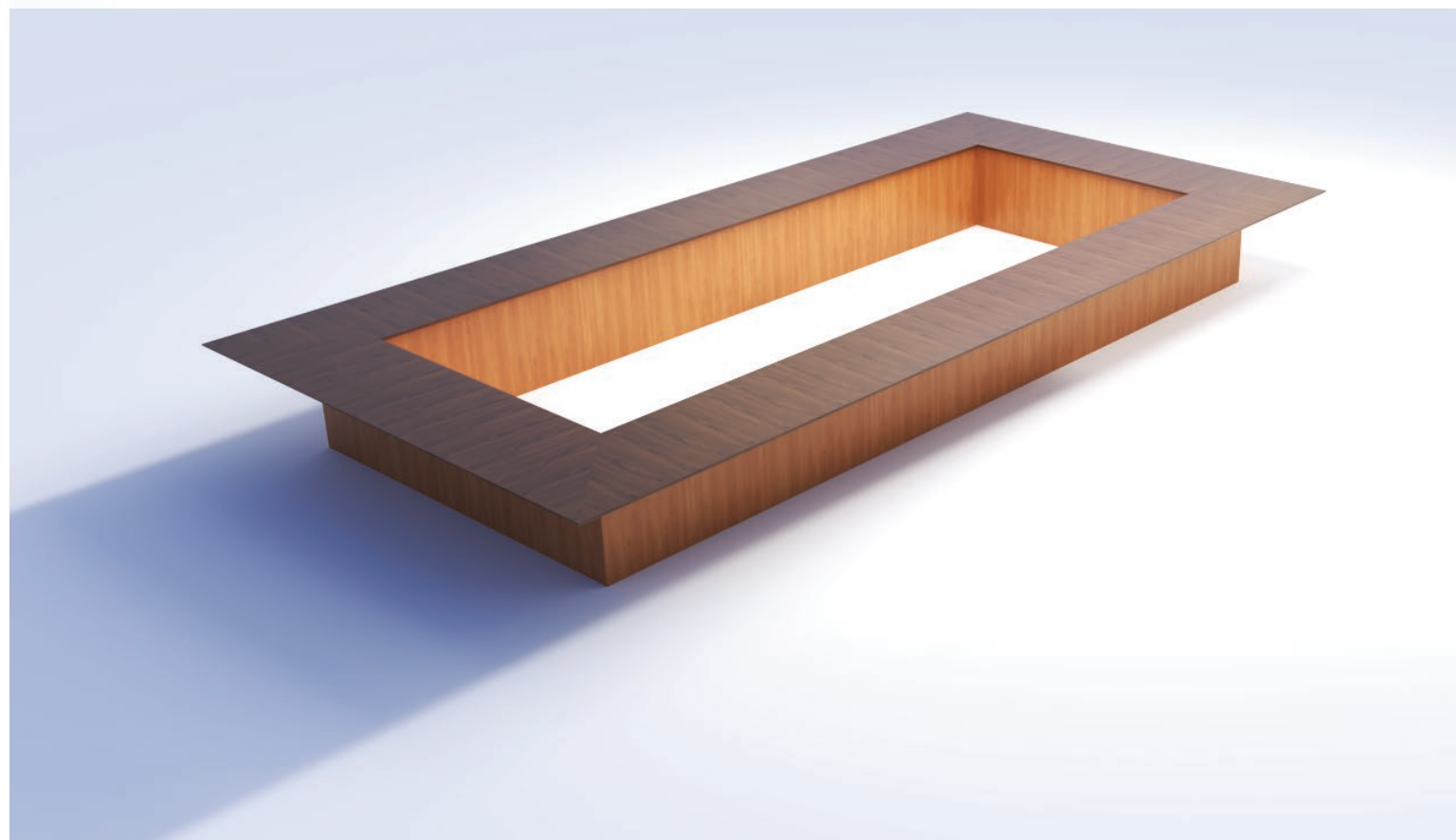
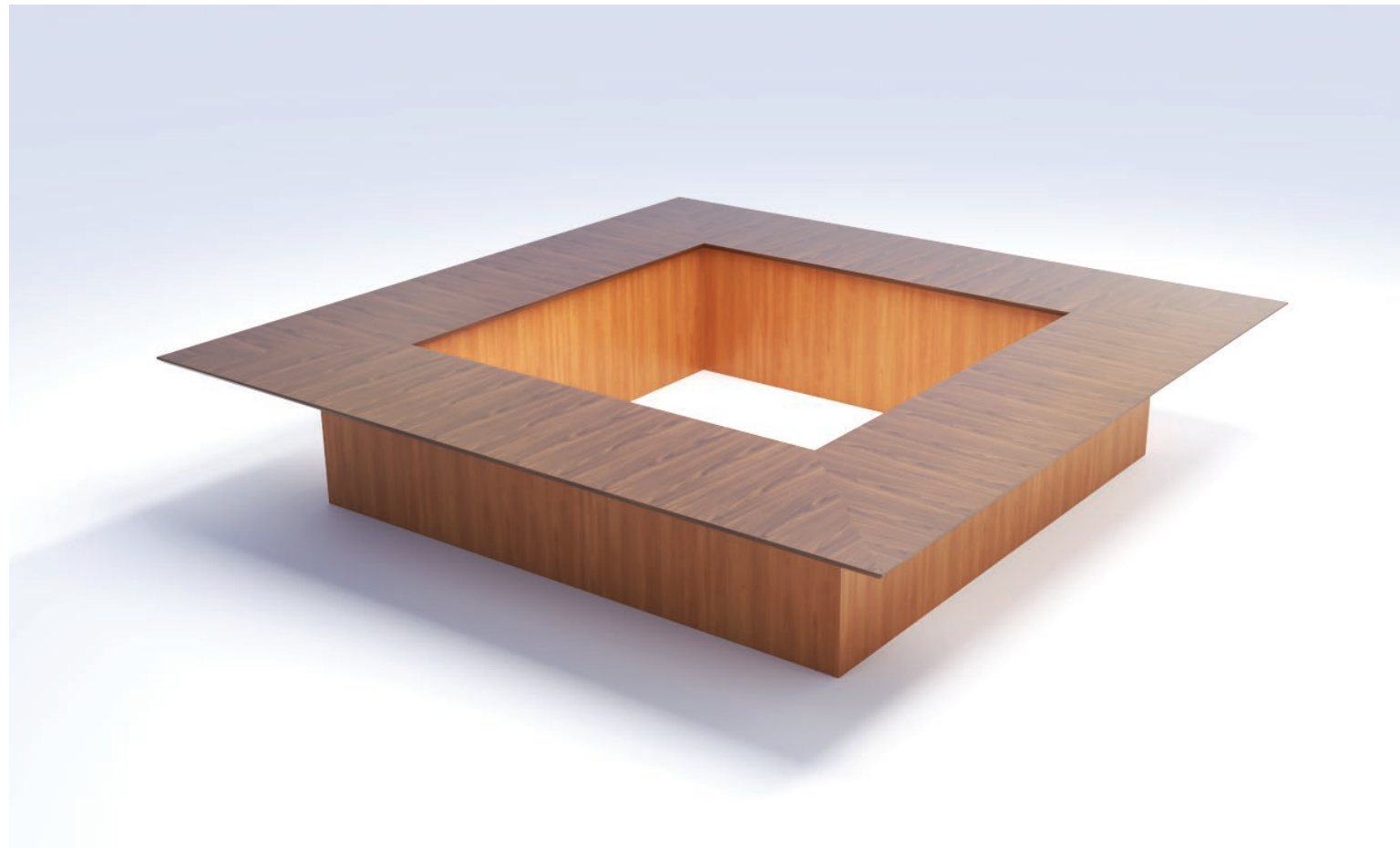


TABLE TOP DEPTH	MODEL #	DIMENSIONS	SEATS	WOOD TOP			LAMINATE TOP
				DELUXE	PREMIUM	STANDARD	BASIC
30"	USHPL-30120120	120"W X 120"L	12	\$37,460	\$32,636	\$32,068	\$24,381
	USHPL-30120192	120"W X 192"L	16	\$52,444	\$45,690	\$44,896	\$34,133
	USHPL-30120240	120"W X 240"L	20	\$62,434	\$54,393	\$53,447	\$40,635
	USHPL-30120288	120"W X 288"L	22	\$72,423	\$63,095	\$61,999	\$47,136
	USHPL-30120336	120"W X 336"L	26	\$82,413	\$71,798	\$70,550	\$53,638
	USHPL-30144120	144"W X 120"L	12	\$39,958	\$34,811	\$34,206	\$26,006
	USHPL-30144192	144"W X 192"L	18	\$54,942	\$47,866	\$47,033	\$35,759
	USHPL-30144240	144"W X 240"L	20	\$64,931	\$56,568	\$55,585	\$42,260
	USHPL-30144288	144"W X 288"L	24	\$74,920	\$65,271	\$64,136	\$48,762
	USHPL-30144336	144"W X 336"L	26	\$84,910	\$73,974	\$72,688	\$55,263
36"	USHPL-36120120	120"W X 120"L	12	\$38,189	\$34,042	\$33,248	\$27,608
	USHPL-36120192	120"W X 192"L	16	\$53,464	\$47,659	\$46,548	\$38,651
	USHPL-36120240	120"W X 240"L	20	\$63,648	\$56,737	\$55,414	\$46,013
	USHPL-36120288	120"W X 288"L	22	\$73,832	\$65,815	\$64,280	\$53,375
	USHPL-36120336	120"W X 336"L	26	\$84,015	\$74,893	\$73,147	\$60,737
	USHPL-36144120	144"W X 120"L	12	\$40,735	\$36,312	\$35,465	\$29,448
	USHPL-36144192	144"W X 192"L	18	\$56,010	\$49,928	\$48,764	\$40,491
	USHPL-36144240	144"W X 240"L	20	\$66,194	\$59,006	\$57,631	\$47,853
	USHPL-36144288	144"W X 288"L	24	\$76,378	\$68,084	\$66,497	\$55,215
	USHPL-36144336	144"W X 336"L	26	\$86,561	\$77,162	\$75,363	\$62,578

Notes : Laminates or Paint can be substituted for veneer on work surfaces at no extra charge •
 Our Deluxe and Standard edges are available 1-3/4" thickness • add 10 % to cost of table top
 *Consult Your Colecraft Representative regarding Price Reduction For Wood Tape
 *Edges WXBVL, LBVL, SE • add 10 % to cost of table top
 *Edges WXWE • Subtract 10 % to cost of table top

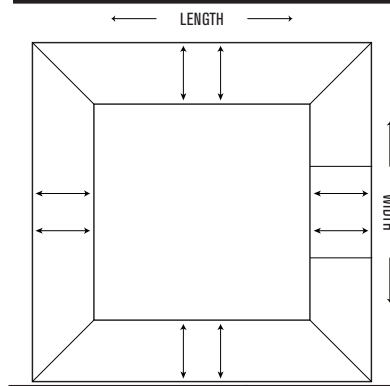
Stud Wall Construction with Wire Access Panels

COLECRAFT



Large Conference

COLECRAFT



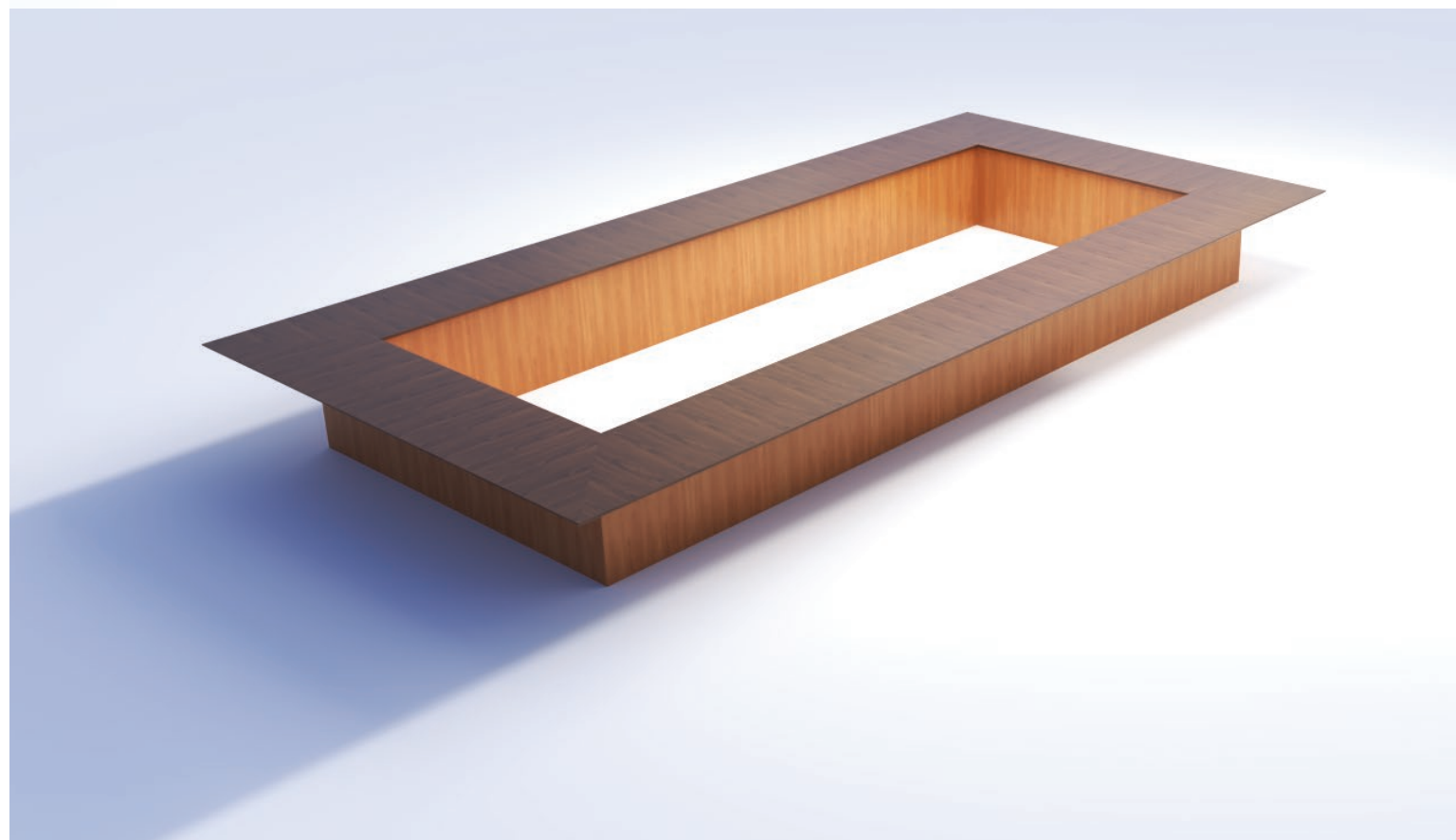
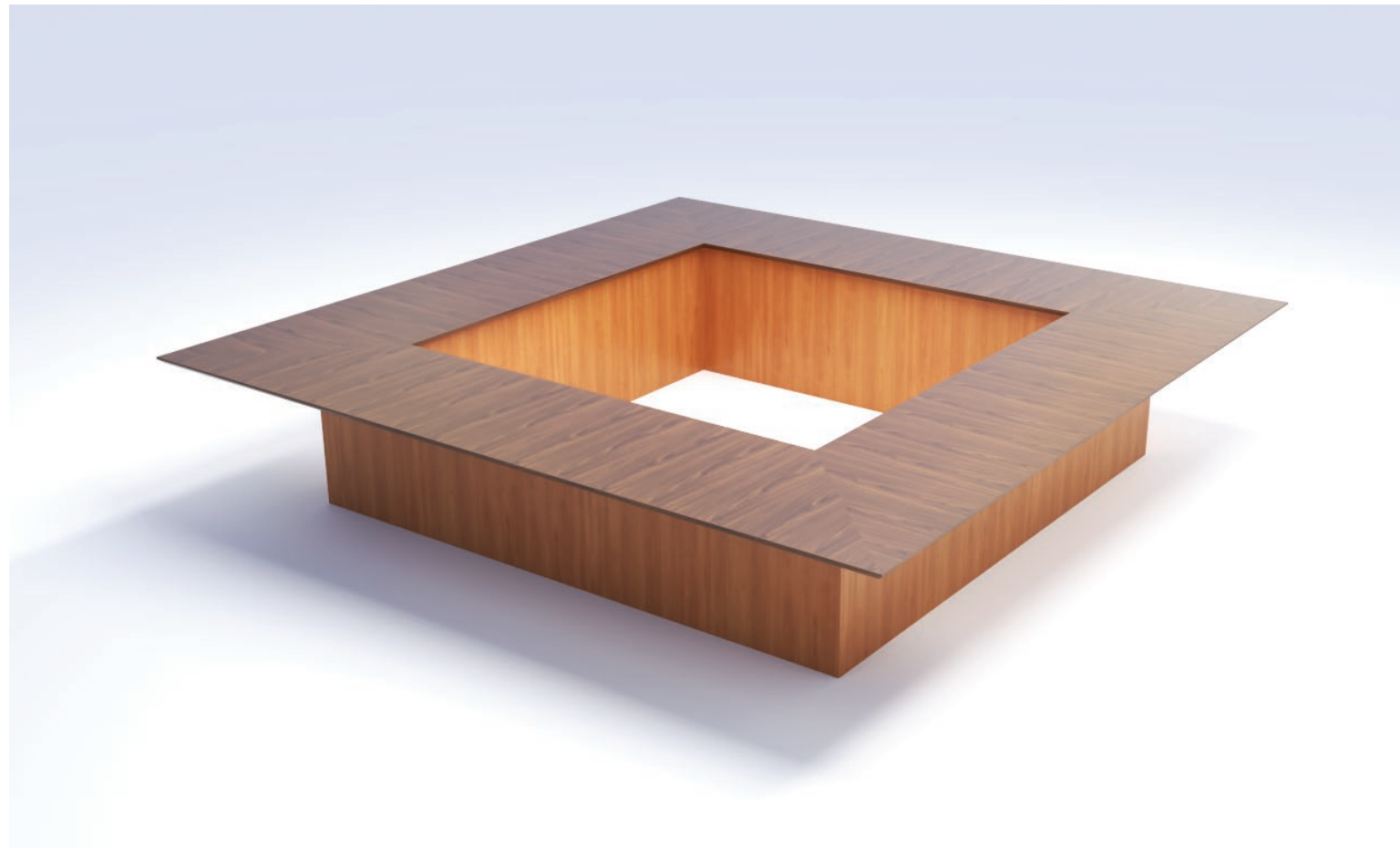
- WKNF1
- WBNS1
- WDRD1
- WRBV1
- WBEV1
- WTRD1
- WBNS
- WDRD
- WRBV
- WBEV
- WTRD
- WXWE*
- WXCR
- WXBV
- WXBD
- WXRD
- WXFL
- WXBVL*
- SE*
- PVC
- LBVL*

TABLE TOP DEPTH	MODEL #	DIMENSIONS	SEATS	WOOD TOP			LAMINATE TOP
				DELUXE	PREMIUM	STANDARD	BASIC
30"	RCT-30120120	120"W X 120"L	16	\$48,278	\$48,073	\$46,290	\$27,549
	RCT-30120192	120"W X 192"L	20	\$62,762	\$62,495	\$60,178	\$35,814
	RCT-30120240	120"W X 240"L	24	\$72,417	\$72,110	\$69,436	\$41,324
	RCT-30120288	120"W X 288"L	26	\$82,073	\$81,725	\$78,694	\$46,834
	RCT-30120336	120"W X 336"L	30	\$91,728	\$91,339	\$87,952	\$52,343
	RCT-30144120	144"W X 120"L	18	\$53,106	\$52,881	\$50,919	\$30,304
	RCT-30144192	144"W X 192"L	22	\$67,589	\$67,303	\$64,807	\$38,569
	RCT-30144240	144"W X 240"L	26	\$77,245	\$76,917	\$74,065	\$44,079
	RCT-30144288	144"W X 288"L	28	\$86,901	\$86,532	\$83,323	\$49,588
	RCT-30144336	144"W X 336"L	32	\$96,556	\$96,146	\$92,581	\$55,098
36"	RCT-36120120	120"W X 120"L	16	\$50,683	\$50,478	\$48,683	\$32,373
	RCT-36120192	120"W X 192"L	20	\$65,888	\$65,622	\$63,287	\$42,085
	RCT-36120240	120"W X 240"L	24	\$76,024	\$75,718	\$73,024	\$48,560
	RCT-36120288	120"W X 288"L	26	\$86,161	\$85,813	\$82,760	\$55,035
	RCT-36120336	120"W X 336"L	30	\$96,298	\$95,909	\$92,497	\$61,509
				\$0			\$0
	RCT-36144120	144"W X 120"L	18	\$55,751	\$55,526	\$53,551	\$35,611
	RCT-36144192	144"W X 192"L	22	\$70,956	\$70,670	\$68,156	\$45,323
	RCT-36144240	144"W X 240"L	26	\$81,093	\$80,765	\$77,892	\$51,797
	RCT-36144288	144"W X 288"L	28	\$91,229	\$90,861	\$87,629	\$58,272
RCT-36144336	144"W X 336"L	32	\$101,366	\$100,957	\$97,365	\$64,747	

Notes : Laminates or Paint can be substituted for veneer on work surfaces at no extra charge •
 Our Deluxe and Standard edges are available 1-3/4" thickness • add 10 % to cost of table top
 *Consult Your Colecraft Representative regarding Price Reduction For Wood Tape
 *Edges WXBVL, LBVL, SE • add 10 % to cost of table top
 *Edges WXWE • Subtract 10 % to cost of table top

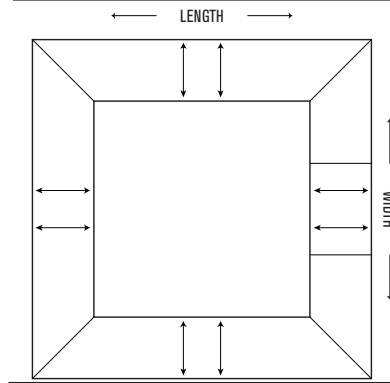
Panel Base Construction

COLECRAFT



Large Conference

COLECRAFT



- | | | |
|-------|------|--------|
| WKNF1 | WBNS | WXWE* |
| WBNS1 | WDRD | WXCR |
| WDRD1 | WRBV | WXBV |
| WRBV1 | WBEV | WXBD |
| WBEV1 | WTRD | WXRD |
| WTRD1 | | WXFL |
| | | WXBVL* |

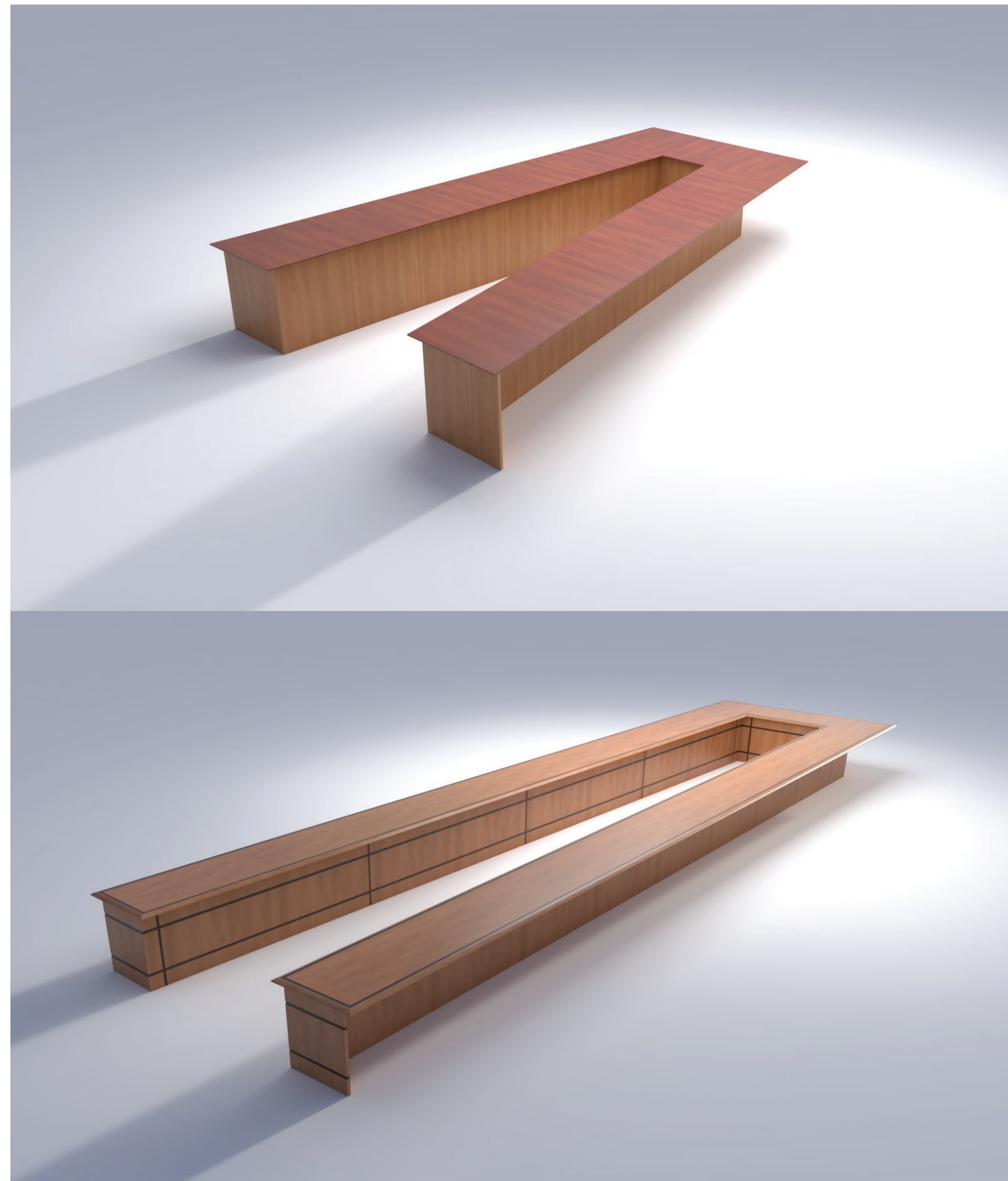
- LAMINATE TOP
- SE*
 - PVC
 - LBVL*

TABLE TOP DEPTH	MODEL #	DIMENSIONS	SEATS	DELUXE	PREMIUM	STANDARD	BASIC
30"	RCTPL-30120120	120"W X 120"L	16	\$43,450	\$38,939	\$37,495	\$22,315
	RCTPL-30120192	120"W X 192"L	20	\$56,485	\$50,621	\$48,744	\$29,009
	RCTPL-30120240	120"W X 240"L	24	\$65,175	\$58,409	\$56,243	\$33,472
	RCTPL-30120288	120"W X 288"L	26	\$73,866	\$66,197	\$63,742	\$37,935
	RCTPL-30120336	120"W X 336"L	30	\$82,556	\$73,985	\$71,241	\$42,398
	RCTPL-30144120	144"W X 120"L	18	\$47,795	\$42,833	\$41,245	\$24,546
	RCTPL-30144192	144"W X 192"L	22	\$60,830	\$54,515	\$52,493	\$31,241
	RCTPL-30144240	144"W X 240"L	26	\$69,520	\$62,303	\$59,992	\$35,704
	RCTPL-30144288	144"W X 288"L	28	\$78,211	\$70,091	\$67,491	\$40,167
	RCTPL-30144336	144"W X 336"L	32	\$86,901	\$77,879	\$74,990	\$44,630
36"	RCTPL-36120120	120"W X 120"L	16	\$45,615	\$40,887	\$39,433	\$26,222
	RCTPL-36120192	120"W X 192"L	20	\$59,299	\$53,154	\$51,263	\$34,089
	RCTPL-36120240	120"W X 240"L	24	\$68,422	\$61,331	\$59,149	\$39,334
	RCTPL-36120288	120"W X 288"L	26	\$77,545	\$69,509	\$67,036	\$44,578
	RCTPL-36120336	120"W X 336"L	30	\$86,668	\$77,686	\$74,922	\$49,822
	RCTPL-36144120	144"W X 120"L	18	\$50,176	\$44,976	\$43,376	\$28,845
	RCTPL-36144192	144"W X 192"L	22	\$63,861	\$57,242	\$55,206	\$36,711
	RCTPL-36144240	144"W X 240"L	26	\$72,983	\$65,420	\$63,093	\$41,956
	RCTPL-36144288	144"W X 288"L	28	\$82,106	\$73,597	\$70,979	\$47,200
	RCTPL-36144336	144"W X 336"L	32	\$91,229	\$81,775	\$78,866	\$52,445

Notes : Laminates or Paint can be substituted for veneer on work surfaces at no extra charge •
 Our Deluxe and Standard edges are available 1-3/4" thickness • add 10 % to cost of table top
 *Consult Your Colecraft Representative regarding Price Reduction For Wood Tape
 *Edges WXBVL, LBVL, SE • add 10 % to cost of table top
 *Edges WXWE • Subtract 10 % to cost of table top

Stud Wall Construction with Wire Access Panels

COLECRAFT



Conference Table Tops

COLECRAFT

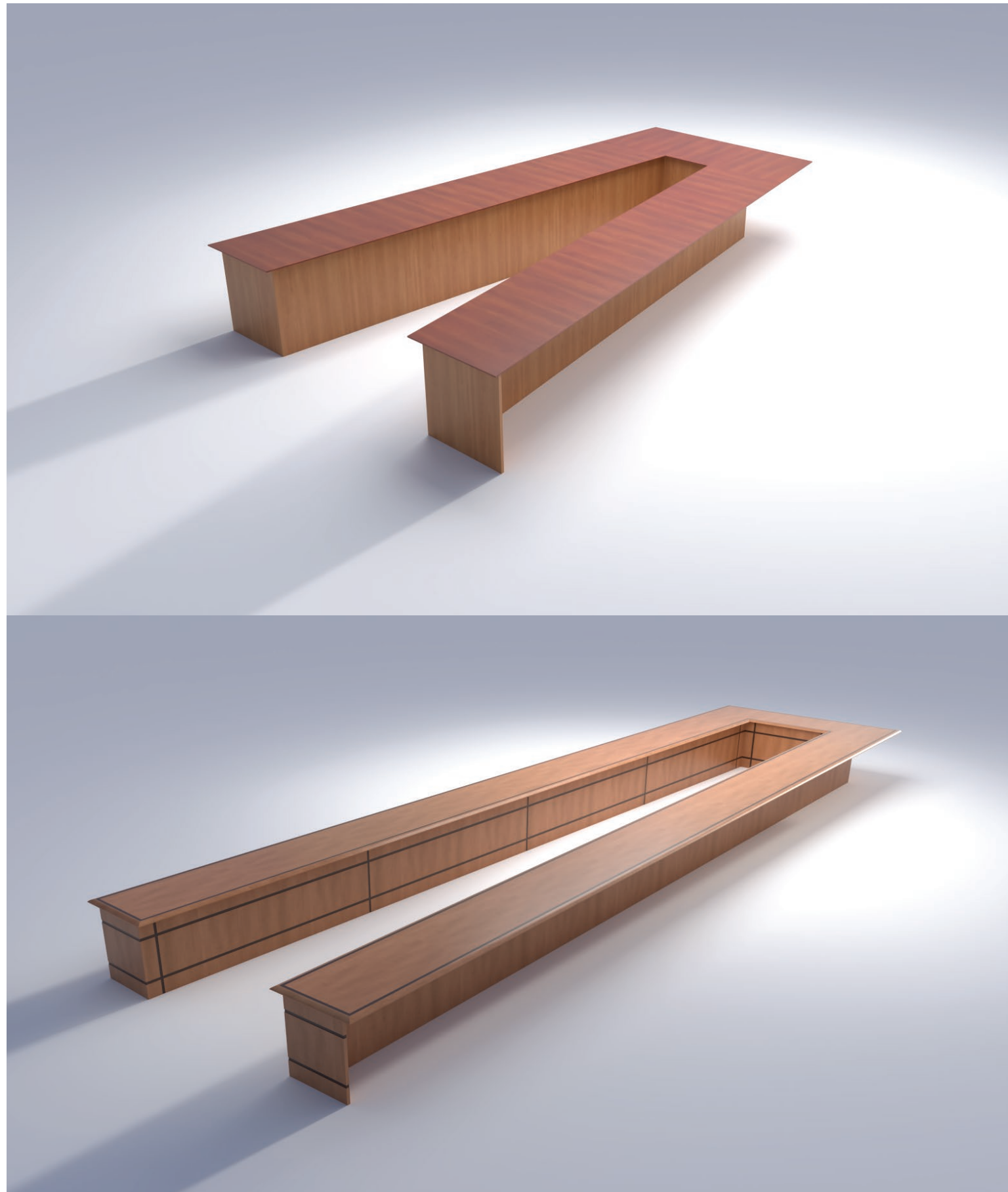
WOOD TOP			LAMINATE TOP
WKNF1	WBNS	WXWE*	SE*
WBNS1	WDRD	WXCR	PVC
WDRD1	WRBV	WXBV	
WRBV1	WBEV	WXBD	
WBEV1	WTRD	WXRD	
WTRD1		WXFL	
		WXBVL*	LBVL*

TABLE TOP DEPTH	MODEL #	DIMENSIONS	SEATS	DELUXE	PREMIUM	STANDARD	BASIC
30"	WDG-30120120	120"W X 120"L	8	\$33,615	\$31,684	\$31,544	\$18,060
	WDG-30120192	120"W X 192"L	12	\$50,400	\$47,505	\$47,295	\$27,078
	WDG-30120240	120"W X 240"L	16	\$61,982	\$58,423	\$58,164	\$33,301
	WDG-30120288	120"W X 288"L	20	\$73,707	\$69,475	\$69,167	\$39,600
	WDG-30120336	120"W X 336"L	22	\$85,516	\$80,605	\$80,248	\$45,945
	WDG-30144120	144"W X 120"L	8	\$35,063	\$33,049	\$32,903	\$18,838
	WDG-30144192	144"W X 192"L	14	\$51,377	\$48,426	\$48,212	\$27,603
	WDG-30144240	144"W X 240"L	16	\$62,779	\$59,174	\$58,912	\$33,729
	WDG-30144288	144"W X 288"L	20	\$74,379	\$70,108	\$69,797	\$39,961
	WDG-30144336	144"W X 336"L	22	\$86,096	\$81,151	\$80,792	\$46,256
36"	WDG-36120120	120"W X 120"L	8	\$35,296	\$33,041	\$32,898	\$21,119
	WDG-36120192	120"W X 192"L	12	\$52,920	\$49,540	\$49,326	\$31,664
	WDG-36120240	120"W X 240"L	16	\$65,082	\$60,925	\$60,662	\$38,941
	WDG-36120288	120"W X 288"L	20	\$77,393	\$72,450	\$72,137	\$46,308
	WDG-36120336	120"W X 336"L	22	\$89,793	\$84,057	\$83,694	\$53,727
	WDG-36144120	144"W X 120"L	8	\$36,816	\$34,464	\$34,315	\$22,029
	WDG-36144192	144"W X 192"L	14	\$53,946	\$50,500	\$50,282	\$32,278
	WDG-36144240	144"W X 240"L	16	\$65,919	\$61,708	\$61,442	\$39,442
	WDG-36144288	144"W X 288"L	20	\$78,098	\$73,110	\$72,794	\$46,730
	WDG-36144336	144"W X 336"L	22	\$90,401	\$84,627	\$84,261	\$54,091

Notes :
 • Laminate or Paint can be substituted for veneer on work surfaces at no extra charge •
 • Our Deluxe and Standard edges are available 1-3/4" thickness • add 10 % to cost of table top
 • *Consult Your Colecraft Representative regarding Price Reduction For Wood Tape
 • *Edges WXBVL, LBVL, SE • add 10 % to cost of table top
 • *Edges WXWE • Subtract 10 % to cost of table top

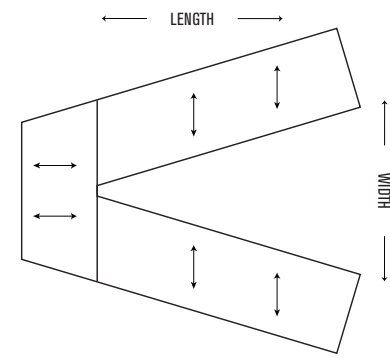
Panel Base Construction

COLECRAFT



Conference Table Tops

COLECRAFT



- | | | |
|-------|------|--------|
| WKNF1 | WBNS | WXWE* |
| WBNS1 | WDRD | WXCR |
| WDRD1 | WRBV | WXBV |
| WRBV1 | WBEV | WXBD |
| WBEV1 | WTRD | WXRD |
| WTRD1 | | WXFL |
| | | WXBVL* |

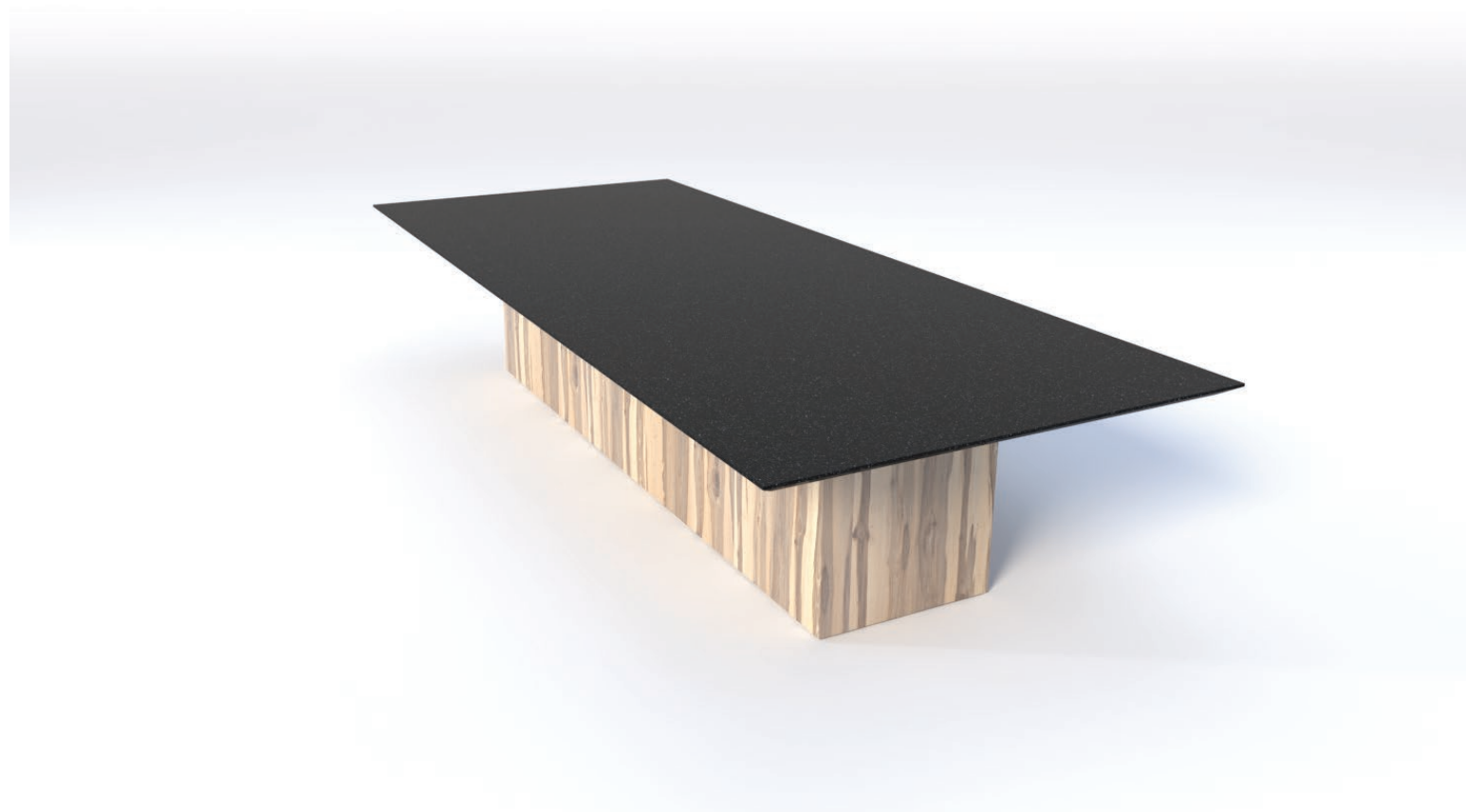
- LAMINATE TOP
- SE*
 - PVC
 - LBVL*

TABLE TOP DEPTH	MODEL #	DIMENSIONS	SEATS	DELUXE	PREMIUM	STANDARD	BASIC
30"	WDGPL-30120120	120"W X 120"L	8	\$30,253	\$25,664	\$25,551	\$14,629
	WDGPL-30120192	120"W X 192"L	12	\$45,360	\$38,479	\$38,309	\$21,933
	WDGPL-30120240	120"W X 240"L	16	\$55,784	\$47,323	\$47,113	\$26,974
	WDGPL-30120288	120"W X 288"L	20	\$66,337	\$56,274	\$56,025	\$32,076
	WDGPL-30120336	120"W X 336"L	22	\$76,964	\$65,290	\$65,001	\$37,215
	WDGPL-30144120	144"W X 120"L	8	\$31,556	\$26,770	\$26,651	\$15,259
	WDGPL-30144192	144"W X 192"L	14	\$46,239	\$39,225	\$39,051	\$22,358
	WDGPL-30144240	144"W X 240"L	16	\$56,501	\$47,931	\$47,719	\$27,321
	WDGPL-30144288	144"W X 288"L	20	\$66,941	\$56,787	\$56,536	\$32,369
	WDGPL-30144336	144"W X 336"L	22	\$77,486	\$65,733	\$65,441	\$37,468
36"	WDGPL-36120120	120"W X 120"L	8	\$31,766	\$26,763	\$26,648	\$17,106
	WDGPL-36120192	120"W X 192"L	12	\$47,628	\$40,127	\$39,954	\$25,648
	WDGPL-36120240	120"W X 240"L	16	\$58,574	\$49,349	\$49,136	\$31,543
	WDGPL-36120288	120"W X 288"L	20	\$69,654	\$58,685	\$58,431	\$37,509
	WDGPL-36120336	120"W X 336"L	22	\$80,813	\$68,086	\$67,792	\$43,519
	WDGPL-36144120	144"W X 120"L	8	\$33,134	\$27,916	\$27,795	\$17,843
	WDGPL-36144192	144"W X 192"L	14	\$48,551	\$40,905	\$40,728	\$26,145
	WDGPL-36144240	144"W X 240"L	16	\$59,327	\$49,984	\$49,768	\$31,948
	WDGPL-36144288	144"W X 288"L	20	\$70,288	\$59,219	\$58,963	\$37,851
	WDGPL-36144336	144"W X 336"L	22	\$81,361	\$68,548	\$68,251	\$43,814

Notes : Laminates or Paint can be substituted for veneer on work surfaces at no extra charge •
 Our Deluxe and Standard edges are available 1-3/4" thickness • add 10 % to cost of table top
 *Consult Your Colecraft Representative regarding Price Reduction For Wood Tape
 *Edges WXBVL, LBVL, SE • add 10 % to cost of table top
 *Edges WXWE • Subtract 10 % to cost of table top

Rectangle Top with Monolithic Base

COLECRAFT



Conference Table Tops

COLECRAFT

- WKNF1
- WBNS1
- WDRD1
- WRBV1
- WBEV1
- WTRD1

- WBNS
- WDRD
- WRBV
- WBEV
- WTRD

- WXWE*
- WXCR
- WXBV
- WXBD
- WXRD
- WXFL
- WXBVL*

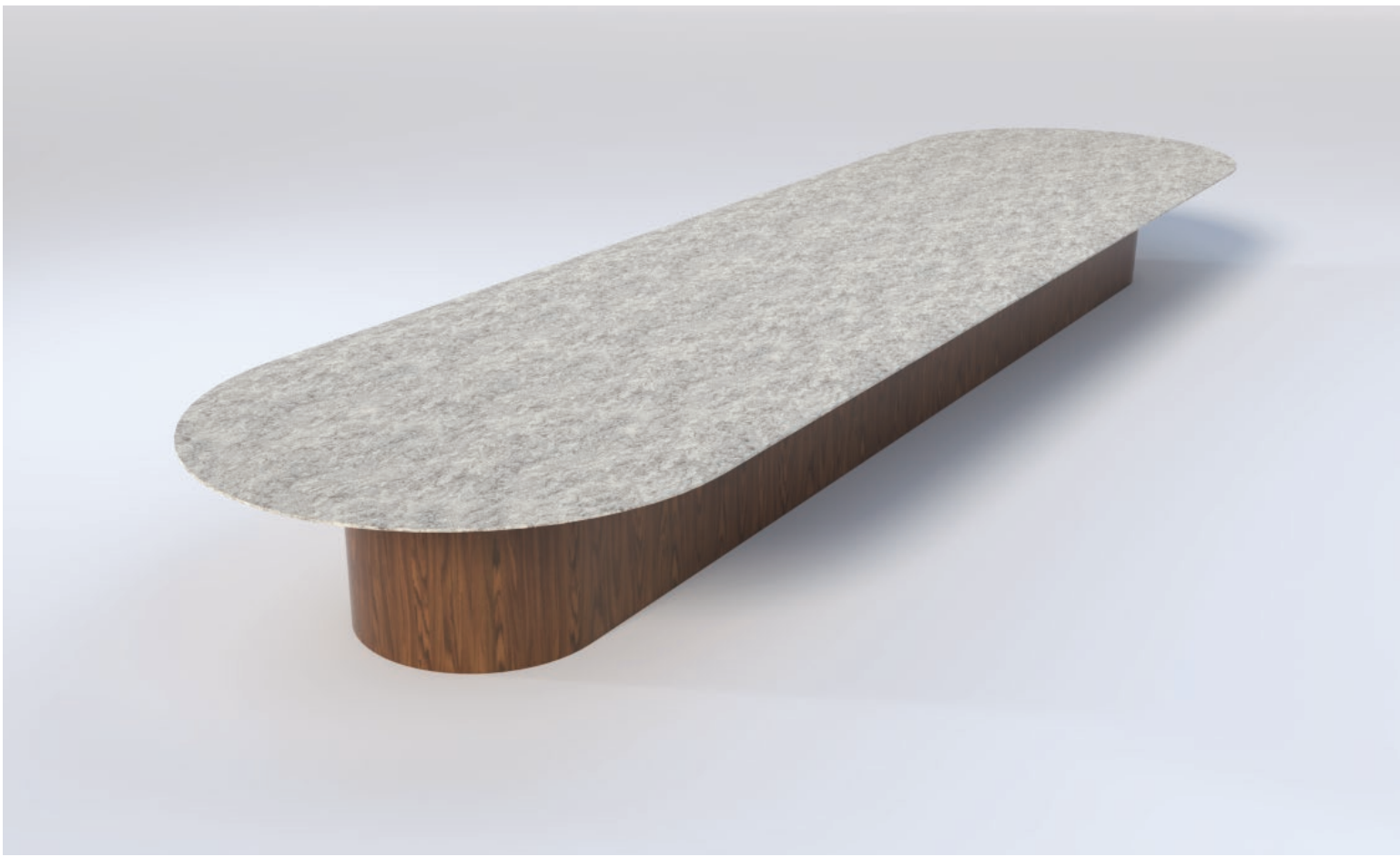
- SE*
- PVC
- LBVL*

TABLE TOP WIDTH	MODEL #	DIMENSIONS	SEATS	WOOD TOP			LAMINATE TOP
				DELUXE	PREMIUM	STANDARD	BASIC
60"	RECMON 60120	60"W X 120"L	12	\$16,800	\$15,118	\$13,272	\$8,816
	RECMON 60144	60"W X 144"L	14	\$23,501	\$21,172	\$18,585	\$11,365
	RECMON 60168	60"W X 168"L	16	\$30,722	\$27,649	\$24,270	\$14,481
	RECMON 60192	60"W X 192"L	18	\$35,945	\$32,352	\$28,398	\$16,754
	RECMON 60216	60"W X 216"L	20	\$40,416	\$36,375	\$31,929	\$19,431
	RECMON 60240	60"W X 240"L	22	\$41,693	\$37,525	\$32,889	\$22,345
	RECMON 60288	60"W X 288"L	26	\$54,537	\$49,083	\$43,084	\$28,948
72"	RECMON 72120	72"W X 120"L	12	\$27,036	\$24,225	\$21,629	\$12,978
	RECMON 72144	72"W X 144"L	14	\$32,702	\$29,301	\$26,161	\$15,697
	RECMON 72168	72"W X 168"L	16	\$38,934	\$34,885	\$31,147	\$18,688
	RECMON 72192	72"W X 192"L	18	\$44,359	\$39,746	\$35,487	\$21,292
	RECMON 72216	72"W X 216"L	20	\$49,713	\$44,542	\$39,770	\$23,862
	RECMON 72264	72"W X 264"L	22	\$54,838	\$49,135	\$43,871	\$26,322
	RECMON 72240	72"W X 240"L	24	\$61,265	\$54,893	\$49,012	\$29,407
	RECMON 72288	72"W X 288"L	26	\$66,624	\$59,695	\$53,299	\$31,979
	RECMON 72312	72"W X 312"L	28	\$71,577	\$64,133	\$57,262	\$34,357
84"	RECMON 84120	84"W X 120"L	14	\$30,633	\$27,448	\$24,507	\$14,704
	RECMON 84144	84"W X 144"L	16	\$36,320	\$32,543	\$29,056	\$17,433
	RECMON 84168	84"W X 168"L	18	\$42,327	\$37,925	\$33,861	\$20,317
	RECMON 84192	84"W X 192"L	20	\$47,983	\$42,992	\$38,386	\$23,032
	RECMON 84216	84"W X 216"L	22	\$53,292	\$47,749	\$42,633	\$25,580
	RECMON 84264	84"W X 240"L	24	\$58,519	\$52,433	\$46,815	\$28,089
	RECMON 84240	84"W X 2266"L	26	\$64,985	\$58,226	\$51,988	\$31,193
	RECMON 84288	84"W X 288"L	28	\$70,906	\$63,532	\$56,725	\$34,035
	RECMON 84312	84"W X 312"L	30	\$76,083	\$68,171	\$60,867	\$36,520
	RECMON 84336	84"W X 336"L	32	\$83,035	\$74,400	\$66,428	\$39,857
	RECMON 84360	84"W X 360"L	34	\$87,235	\$78,163	\$69,788	\$41,873

Notes :
 • Laminate or Paint can be substituted for veneer on work surfaces at no extra charge •
 • Our Deluxe and Standard edges are available 1-3/4" thickness • add 10 % to cost of table top
 • *Consult Your Colecraft Representative regarding Price Reduction For Wood Tape
 • *Edges WXBVL, LBVL, SE • add 10 % to cost of table top
 • *Edges WXWE • Subtract 10 % to cost of table top

Racetrack Top with Monolithic Base

COLECRAFT



Conference Table Tops

COLECRAFT

WOOD TOP

- WKNF1
- WBNS1
- WDRD1
- WRBV1
- WBEV1
- WTRD1

LAMINATE TOP

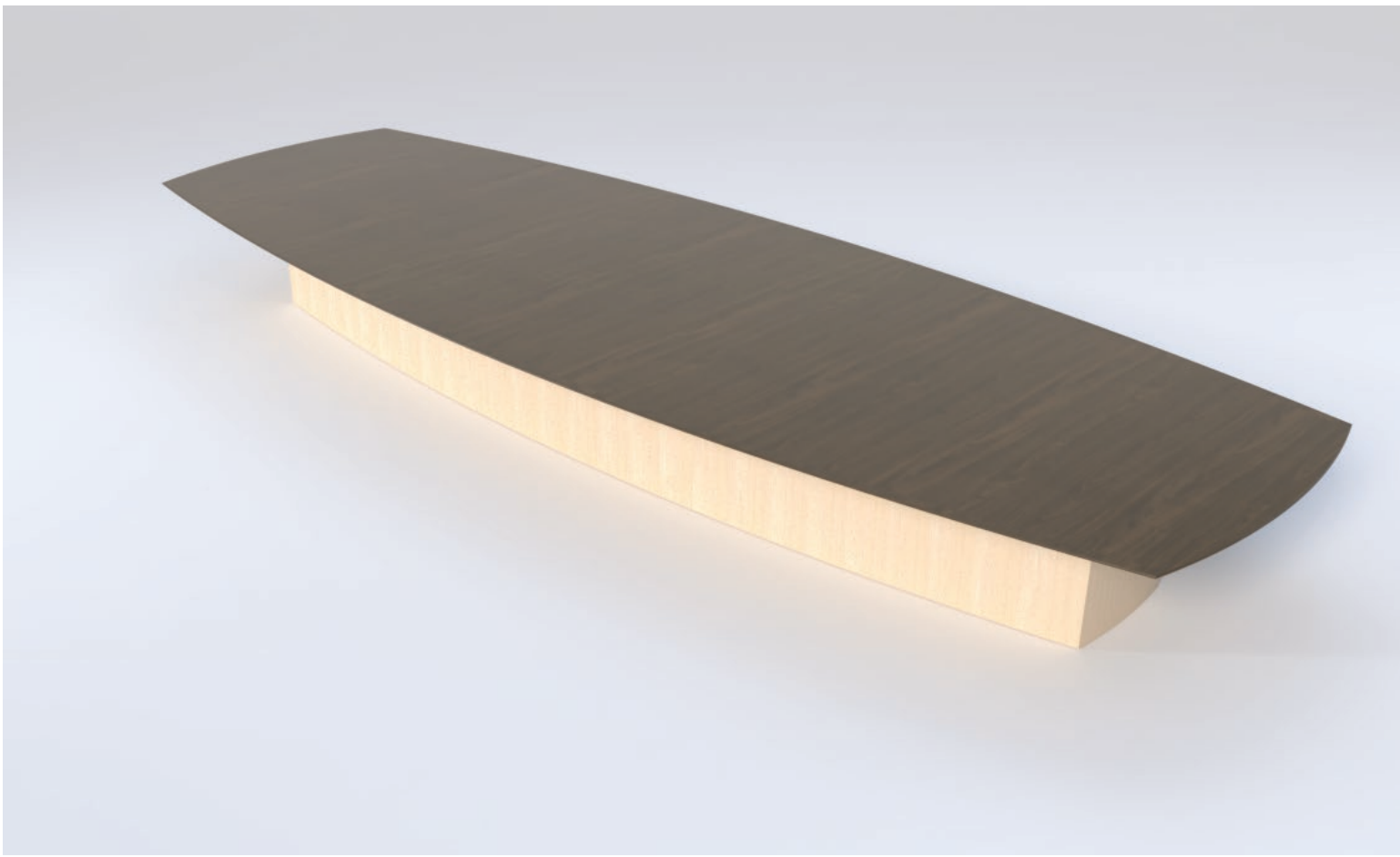
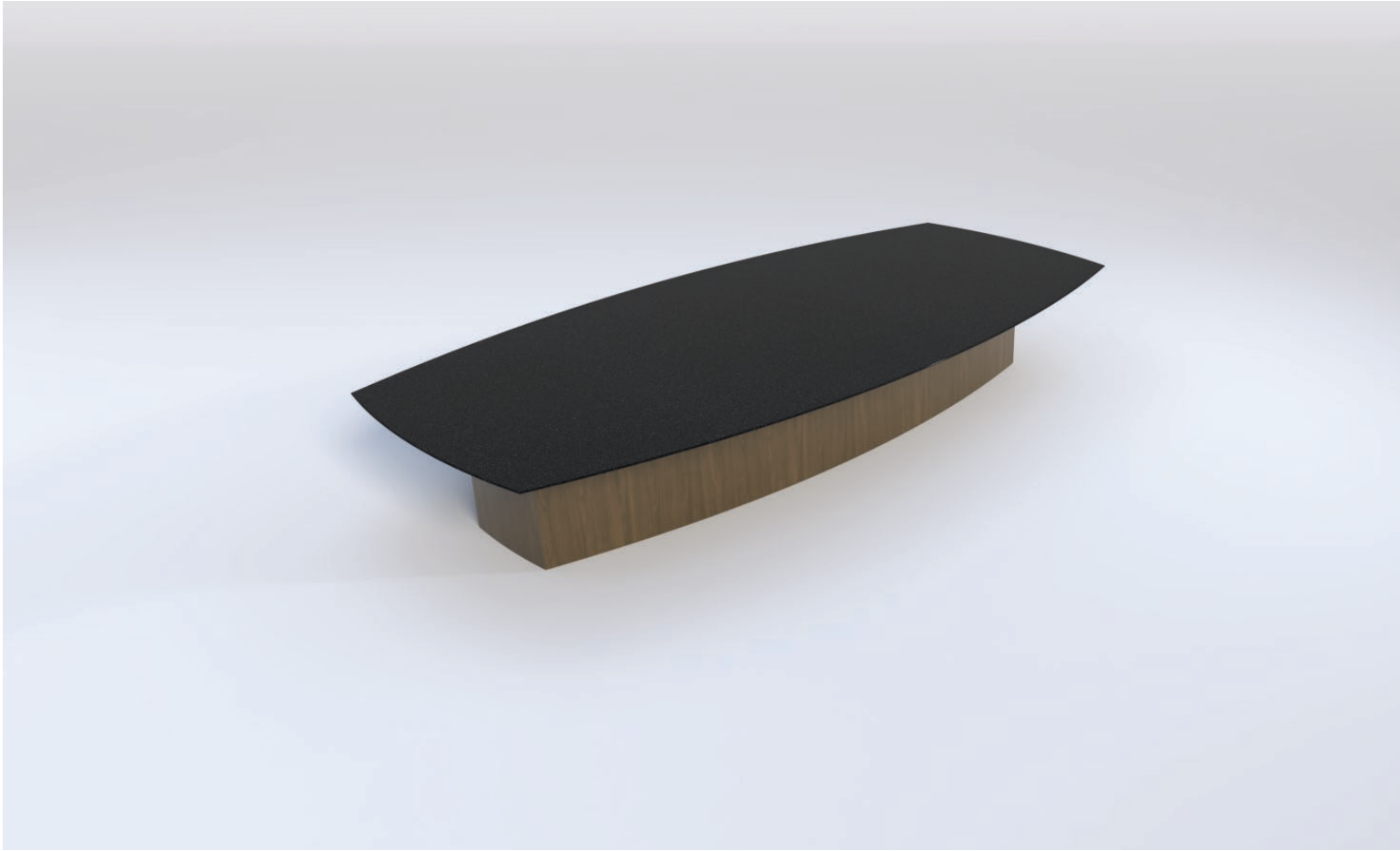
- WXWE*
- WCR
- WXBV
- WXBD
- WXR
- WXFL
- WXBVL*

TABLE TOP WIDTH	MODEL #	DIMENSIONS	SEATS	DELUXE	PREMIUM	STANDARD	BASIC
60"	RTMON 60120	60"W X 120"L	12	\$22,774	\$20,499	\$14,572	\$13,600
	RTMON 60144	60"W X 144"L	14	\$28,988	\$26,088	\$22,902	\$16,009
	RTMON 60168	60"W X 168"L	16	\$40,598	\$36,538	\$32,071	\$22,343
	RTMON 60192	60"W X 192"L	18	\$47,086	\$42,378	\$37,197	\$25,846
	RTMON 60216	60"W X 216"L	20	\$53,571	\$48,214	\$42,321	\$29,824
	RTMON 60240	60"W X 240"L	22	\$55,841	\$50,278	\$44,132	\$34,299
	RTMON 60288	60"W X 288"L	26	\$72,396	\$65,154	\$57,191	\$42,509
72"	RTMON 72120	72"W X 120"L	12	\$33,953	\$30,422	\$27,162	\$16,297
	RTMON 72144	72"W X 144"L	14	\$38,998	\$34,943	\$31,199	\$18,719
	RTMON 72168	72"W X 168"L	16	\$43,845	\$39,285	\$35,076	\$21,045
	RTMON 72192	72"W X 192"L	18	\$48,892	\$43,807	\$39,114	\$23,468
	RTMON 72216	72"W X 216"L	20	\$54,822	\$49,121	\$43,858	\$26,315
	RTMON 72264	72"W X 264"L	22	\$60,704	\$54,391	\$48,564	\$29,138
	RTMON 72240	72"W X 240"L	24	\$67,468	\$60,451	\$53,974	\$32,384
	RTMON 72288	72"W X 288"L	26	\$73,448	\$65,809	\$58,758	\$35,255
	RTMON 72312	72"W X 312"L	28	\$80,476	\$72,106	\$64,381	\$38,628
84"	RTMON 84120	84"W X 120"L	14	\$38,267	\$34,287	\$30,613	\$18,368
	RTMON 84144	84"W X 144"L	16	\$43,377	\$38,865	\$34,701	\$20,821
	RTMON 84168	84"W X 168"L	18	\$48,002	\$43,010	\$38,402	\$23,041
	RTMON 84192	84"W X 192"L	20	\$53,370	\$47,819	\$42,696	\$25,618
	RTMON 84216	84"W X 216"L	22	\$59,300	\$53,133	\$47,440	\$28,464
	RTMON 84264	84"W X 240"L	24	\$65,239	\$58,454	\$52,191	\$31,315
	RTMON 84240	84"W X 2266"L	26	\$72,040	\$64,548	\$57,632	\$34,579
	RTMON 84288	84"W X 288"L	28	\$78,634	\$70,456	\$62,907	\$37,744
	RTMON 84312	84"W X 312"L	30	\$85,144	\$76,289	\$68,115	\$40,869
	RTMON 84336	84"W X 336"L	32	\$91,430	\$81,922	\$73,144	\$43,887
	RTMON 84360	84"W X 360"L	34	\$96,008	\$86,023	\$76,806	\$46,084

Notes :
 Laminate or Paint can be substituted for veneer on work surfaces at no extra charge •
 Our Deluxe and Standard edges are available 1-3/4" thickness • add 10 % to cost of table top
 *Consult Your Colecraft Representative regarding Price Reduction For Wood Tape
 *Edges WXBVL, LBVL, SE • add 10 % to cost of table top
 *Edges WXWE • Subtract 10 % to cost of table top

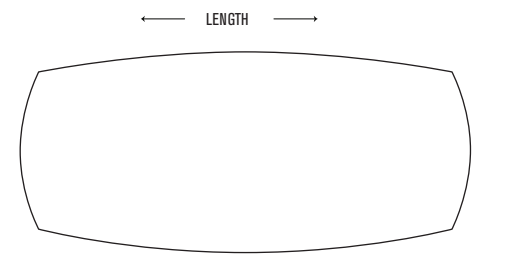
Arched End Boat Top with Monolithic Base

COLECRAFT



Conference Table Tops

COLECRAFT



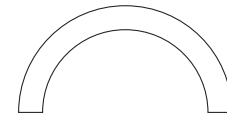
- WKNF1
- WBNS1
- WDRD1
- WRBV1
- WBEV1
- WTRD1
- WBNS
- WDRD
- WRBV
- WBEV
- WTRD
- WXWE*
- WXCR
- WXBV
- WXBD
- WXRD
- WXFL
- WXBVL*
- SE*
- PVC
- LBVL*

TABLE TOP WIDTH	MODEL #	DIMENSIONS	SEATS	WOOD TOP			LAMINATE TOP
				DELUXE	PREMIUM	STANDARD	BASIC
60"	AEBMON 60120	60"W X 120"L	12	\$20,894	\$18,806	\$13,369	\$12,477
	AEBMON 60144	60"W X 144"L	14	\$26,594	\$23,934	\$21,011	\$14,687
	AEBMON 60168	60"W X 168"L	16	\$37,246	\$33,521	\$29,423	\$20,498
	AEBMON 60192	60"W X 192"L	18	\$43,198	\$38,878	\$34,126	\$23,712
	AEBMON 60216	60"W X 216"L	20	\$49,147	\$44,233	\$38,826	\$27,362
	AEBMON 60240	60"W X 240"L	22	\$51,230	\$46,127	\$40,488	\$31,467
	AEBMON 60288	60"W X 288"L	26	\$66,418	\$59,775	\$52,469	\$38,999
72"	AEBMON 72120	72"W X 120"L	12	\$30,963	\$27,743	\$24,770	\$14,862
	AEBMON 72144	72"W X 144"L	14	\$36,599	\$32,793	\$29,279	\$17,568
	AEBMON 72168	72"W X 168"L	16	\$41,535	\$37,215	\$33,228	\$19,937
	AEBMON 72192	72"W X 192"L	18	\$46,276	\$41,463	\$37,021	\$22,212
	AEBMON 72216	72"W X 216"L	20	\$52,816	\$47,324	\$42,253	\$25,352
	AEBMON 72264	72"W X 264"L	22	\$59,112	\$52,964	\$47,289	\$28,374
	AEBMON 72240	72"W X 240"L	24	\$66,216	\$59,330	\$52,973	\$31,784
	AEBMON 72288	72"W X 288"L	26	\$72,565	\$65,018	\$58,052	\$34,831
	AEBMON 72312	72"W X 312"L	28	\$80,510	\$72,137	\$64,408	\$38,645
	84"	AEBMON 84120	84"W X 120"L	14	\$33,397	\$29,924	\$26,718
AEBMON 84144		84"W X 144"L	16	\$39,100	\$35,033	\$31,280	\$18,768
AEBMON 84168		84"W X 168"L	18	\$43,845	\$39,285	\$35,076	\$21,045
AEBMON 84192		84"W X 192"L	20	\$49,793	\$44,614	\$39,834	\$23,900
AEBMON 84216		84"W X 216"L	22	\$54,562	\$48,888	\$43,650	\$26,190
AEBMON 84264		84"W X 240"L	24	\$61,909	\$55,471	\$49,527	\$29,716
AEBMON 84240		84"W X 266"L	26	\$69,495	\$62,267	\$55,596	\$33,357
AEBMON 84288		84"W X 288"L	28	\$77,336	\$69,293	\$61,869	\$37,121
AEBMON 84312		84"W X 312"L	30	\$84,219	\$75,460	\$67,375	\$40,425
AEBMON 84336		84"W X 336"L	32	\$90,074	\$80,706	\$72,059	\$43,236
AEBMON 84360		84"W X 360"L	34	\$95,170	\$85,272	\$76,136	\$45,681

Notes :
 Laminates or Paint can be substituted for veneer on work surfaces at no extra charge •
 Our Deluxe and Standard edges are available 1-3/4" thickness • add 10 % to cost of table top
 *Consult Your Colecraft Representative regarding Price Reduction For Wood Tape
 *Edges WXBVL, LBVL, SE • add 10 % to cost of table top
 *Edges WXWE • Subtract 10 % to cost of table top



Half Circle

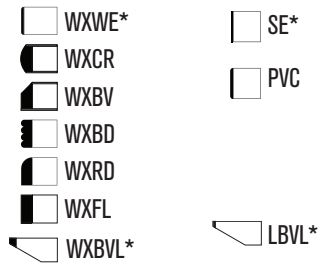


MODEL #	DIMENSIONS	SEATS	JAMERSTOWN (VN)	WILLIAMSBURG (VN)	AMHERST (VN)	AURORA (LM)
HCCC-30120	120"W X 60"D X 36/29"H	6	\$42,869	\$34,005	\$29,538	\$23,429
HCCC-30144	144"W X 72"D X 36/29"H	7	\$51,868	\$41,144	\$35,738	\$28,348
HCCC-30168	168"W X 84"D X 36/29"H	8	\$60,512	\$48,001	\$41,695	\$33,072
HCCC-30192	192"W X 96"D X 36/29"H	9	\$72,573	\$57,568	\$50,005	\$39,664
HCCC-30240	240"W X 120"D X 36/29"H	12	\$90,040	\$71,423	\$62,040	\$49,210
HCCC-30288	288"W X 144"D X 36/29"H	15	\$110,365	\$87,546	\$76,045	\$60,319

Bow



ARCC-30144	144"W X 36/29"H	5	\$34,579	\$27,429	\$23,826	\$18,898
ARCC-30168	168"W X 36/29"H	6	\$40,342	\$32,001	\$27,797	\$22,048
ARCC-30192	192"W X 36/29"H	7	\$48,382	\$38,379	\$33,336	\$26,443
ARCC-30288	288"W X 36/29"H	10	\$73,577	\$58,364	\$50,696	\$40,212



Colecraft Commercial Furnishings

1021 Allen Street - Jamestown, NY 14701

Phone: (844)-500-9356 • (716) 488-2810

www.colecraftcf.com

Fax: (716) 488-2824

Notes :
Laminate or Paint can be substituted for veneer on work surfaces at no extra charge •
Our Deluxe and Standard edges are available 1-3/4" thickness • add 10 % to cost of table top
*Consult Your Colecraft Representative regarding Price Reduction For Wood Tape
*Edges WXBVL, LBVL, SE • add 10 % to cost of table top
*Edges WXWE • Subtract 10 % to cost of table top